

# ANT-WDB-PNF-1518

**Dual-band panel antenna: 15 dBi at 2.4 GHz or 18 dBi at 5 GHz**



- > High-gain antenna to enhance performance
- > Waterproof N-type connector
- > Lightweight
- > Compact form factor
- > Pole-mounting support
- > Housing provides IP65 protection
- > -40 to 80°C operating temperature range

## : Specifications

### Antenna Characteristics

**Frequency:** 2.4 to 2.5 or 5.1 to 5.9 GHz  
**Antenna Type:** Directional panel-type  
**Typical Antenna Gain:** 15/18 dBi  
**Connector:** N-type (female)  
**Impedance:** 50±5 ohms  
**Polarization:** Linear  
**HPBW/horizontal:** 10/50°  
**V.S.W.R.:** 1:1.5 max.  
**HPBW/vertical:** 10/30°  
**Power Handling:** 20 W max.

### Physical Characteristics

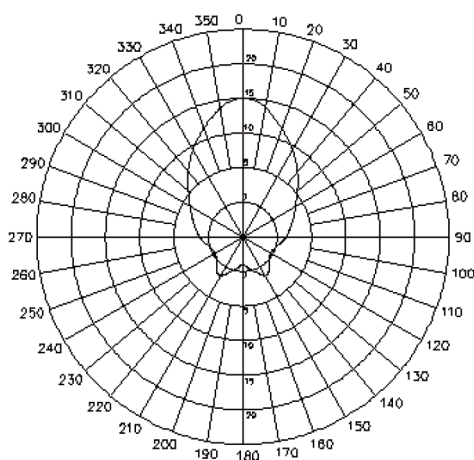
**IP Rating:** IP65  
**Weight:** 1020±10 g  
**Dimensions:** 270 x 205 x 15 mm  
**Radome Material:** PC and ABS  
**Radome Color:** White

### Environmental Limits

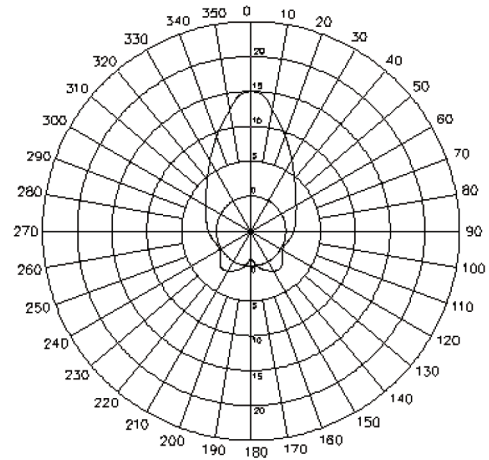
**Operating Temperature:** -40 to 80°C (-40 to 176°F)  
**Storage Temperature:** -40 to 80°C (-40 to 176°F)  
**Ambient Relative Humidity:** 5 to 95% (30°C, non-condensing)

## : Field Patterns

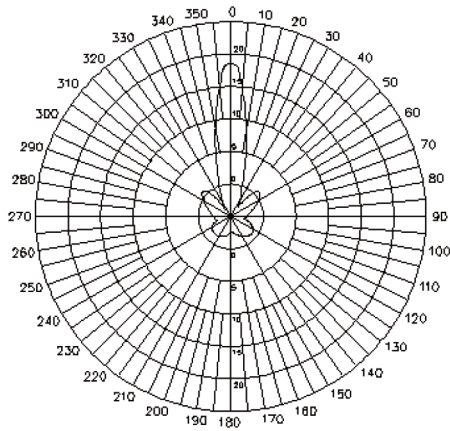
### H-Plane for 2.4 GHz



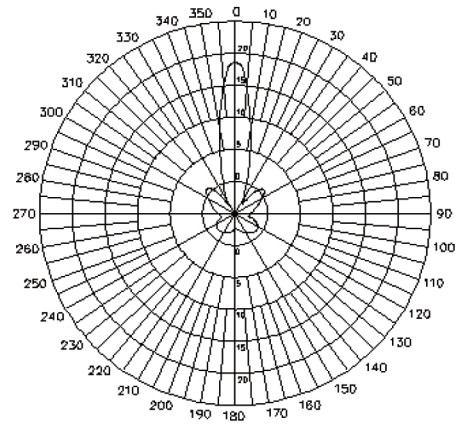
### E-Plane for 2.4 GHz



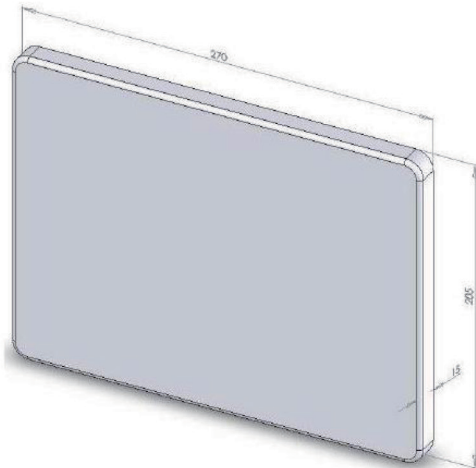
## H-Plane for 5 GHz



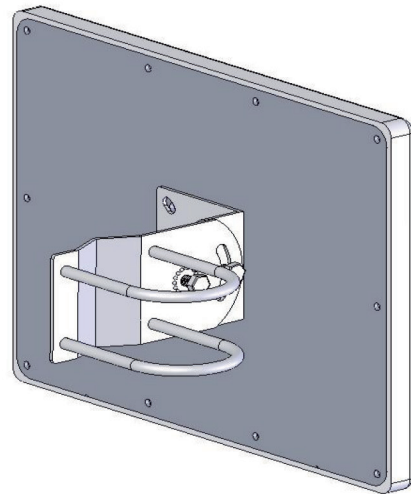
## E-Plane for 5 GHz



### Dimensions



### Mounting



## : Ordering Information

### Available Models

**ANT-WSB-PNF-1518:** 2.4/5 GHz, dual-band panel antenna, 15/18 dBi, N-type (female)

### Optional Accessories (can be purchased separately)

**A-CRF-NMNM-LL4-300:** LMR-400 LITE cable, N-type (male) to N-type (male), 3 meters

**A-CRF-NMNM-LL4-600:** LMR-400 LITE cable, N-type (male) to N-type (male), 6 meters

**A-CRF-NMNM-LL4-900:** LMR-400 LITE cable, N-type (male) to N-type (male), 9 meters

**CRF-N0429N-3M:** CFD400 cable, N-type (male) to N-type (male), 3 meters

**CRF-N0117SA-3M:** CFD200 cable, N-type (male) to RP SMA (male), 3 meters

**A-CRF-RMNM-L1-300:** LMR-195 LITE cable, N-type (male) to RP SMA (male), 3 meters

**A-CRF-RMNM-L1-600:** LMR-195 LITE cable, N-type (male) to RP SMA (male), 6 meters

**A-CRF-RMNM-L1-900:** LMR-195 LITE cable, N-type (male) to RP SMA (male), 9 meters

### Can be used with the following products

**AWK Series:** AWK-3121, AWK-4121, AWK-5222, AWK-6222

**NPort W2000 Series:** NPort W2150 Plus, NPort W2250 Plus, NPort W2004